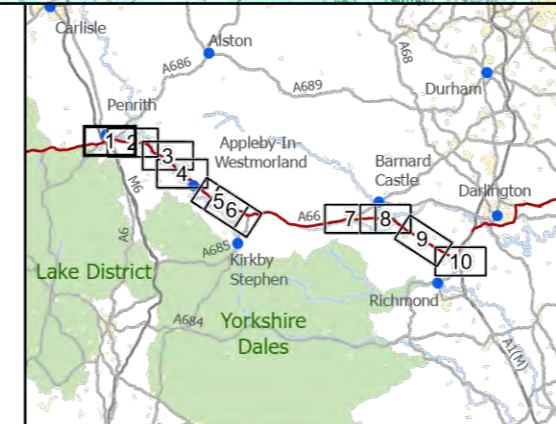


- Route Alignment
- == Existing A66
- ▭ Order Limits
- Study Area 250m
- BGS 1:50k Linear Features
- Mineral Vein
- ◀ Glacial Meltwater Channel
- Fault Unspecified
- BGS 1:50k Bedrock
- Alston Formation - Mudstone Sandstone and Siltstone
- Alston Formation - Sandstone
- Belah Dolomite

- Brockram Breccia
- Crag Limestone
- Eden Shales
- Evaporite - Gypsum
- Four Fathom Limestone
- Great Limestone Member
- Little Limestone
- Penrith Sandstone
- St Bees Sandstone Member
- Stainmore Formation - Mudstone, Siltstone and Sandstone
- Three Yard Limestone



**national highways**  
3 Piccadilly Place  
Manchester  
M1 3BN

P02	First Issue				
	CHAL	CESL	CMCG	AMIT	KWA
	17/03/22	17/03/22	17/03/22	20/04/22	20/04/22
Revision	Created	Checked	Reviewed	Approved	Authorised

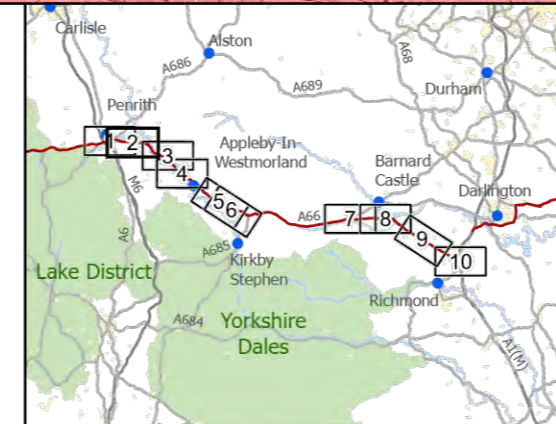
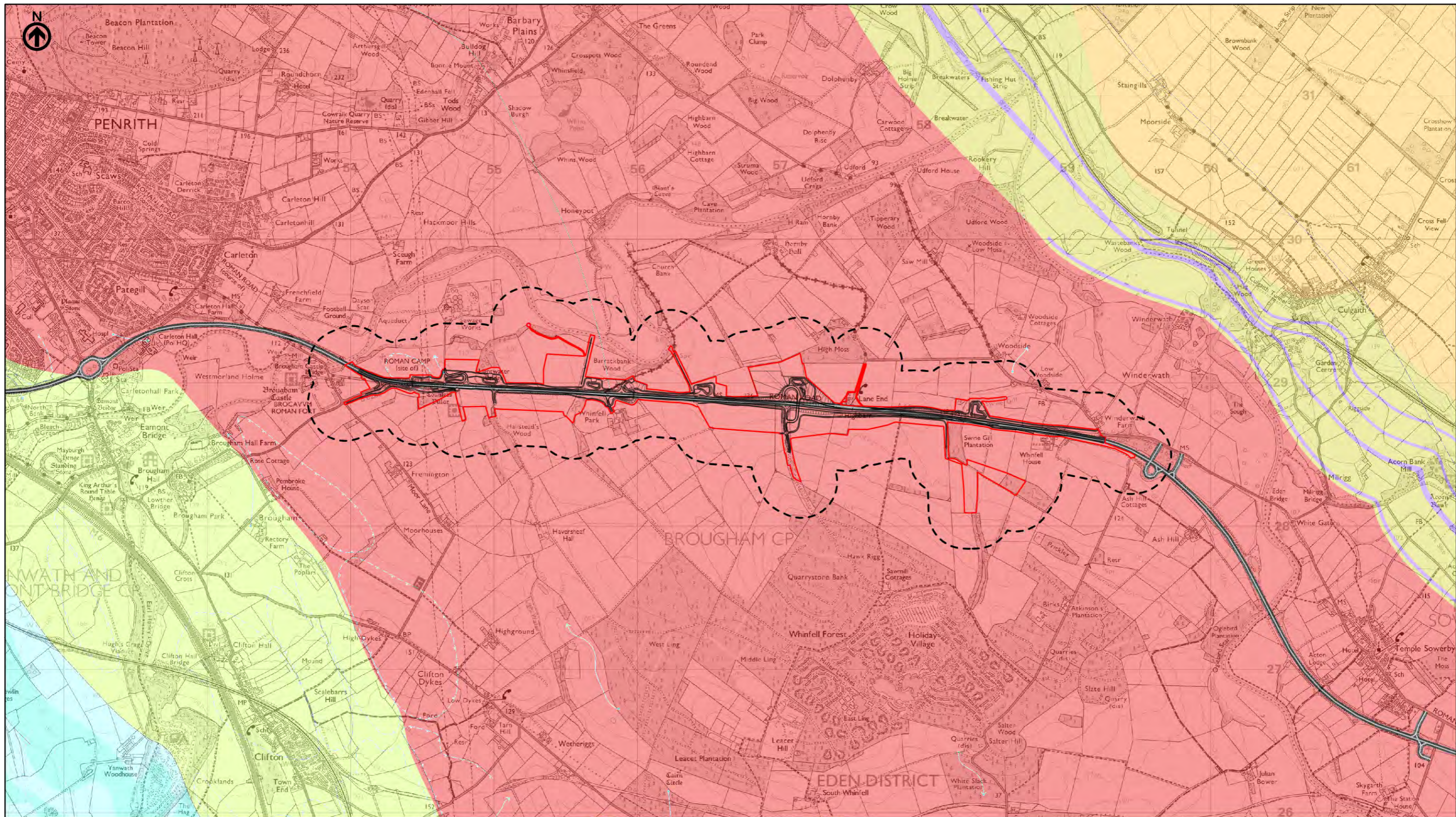
Kilometres  
0 1 2

Scale @ A3: 1:25,000 | Project Ref No HE565627 | Stage: Stage 3

© Crown copyright and database rights (2022). All rights reserved. OS 100030649.  
Contains British Geological Survey materials © UKRI 2022  
Contains public sector information licensed under the Open Government Licence v3.0.

Project Name <b>A66 Northern Trans-Pennine Project</b>			
Map Title <b>Figure 9.3</b>			
Published Geology - Bedrock Geology			
Scheme: 0102, M6 Junction 40 to Kemplay Bank			
Sheet 1 of 10			
Map Number Project	Originator	Volume	
HE565627	AMY	EGT	
S00	MP	LG	005101
Location	Type	Role	Number
S4	FIT FOR STAGE APPROVAL		P02
Suitability	Suitability Description		Revision
S4	FIT FOR STAGE APPROVAL		P02





3 Piccadilly Place  
 Manchester  
 M1 3BN

P02	First Issue				
	CHAL	CESL	CMCG	AMIT	KWHA
	17/03/22	17/03/22	17/03/22	20/04/22	20/04/22
Revision	Created	Checked	Reviewed	Approved	Authorised

Scale @ A3: 1:25,000 | Project Ref No HE565627 | Stage: Stage 3  
 © Crown copyright and database rights (2022). All rights reserved. OS 100030649.  
 Contains British Geological Survey materials © UKRI 2022  
 Contains public sector information licensed under the Open Government Licence v3.0.

Project Name  
**A66 Northern Trans-Pennine Project**

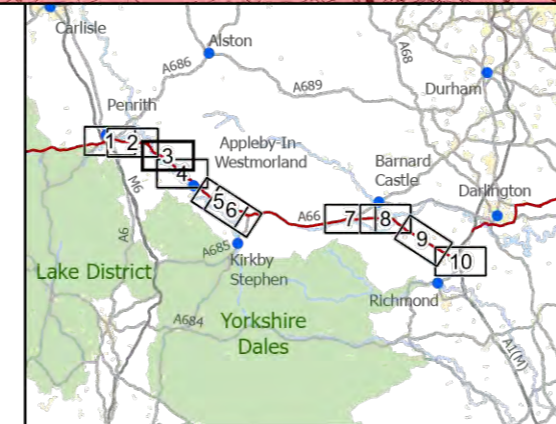
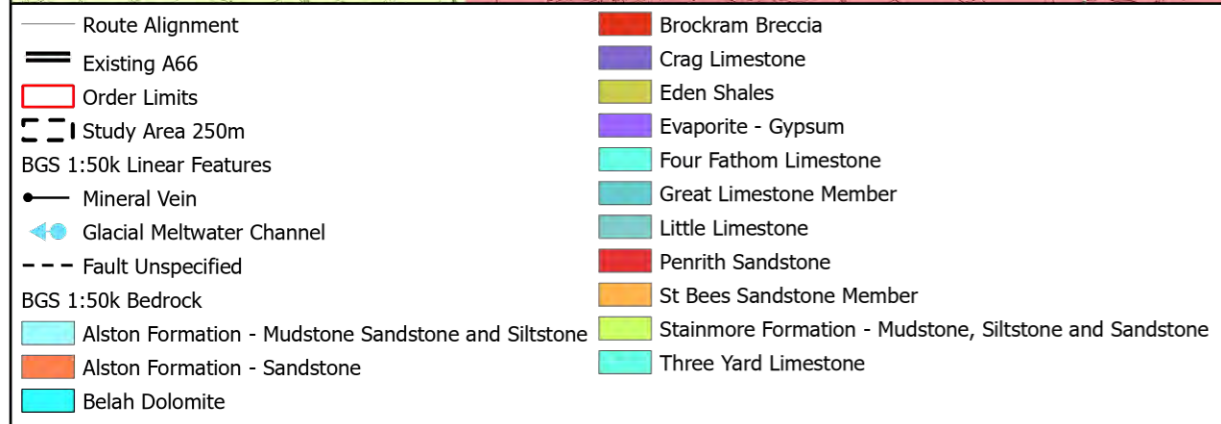
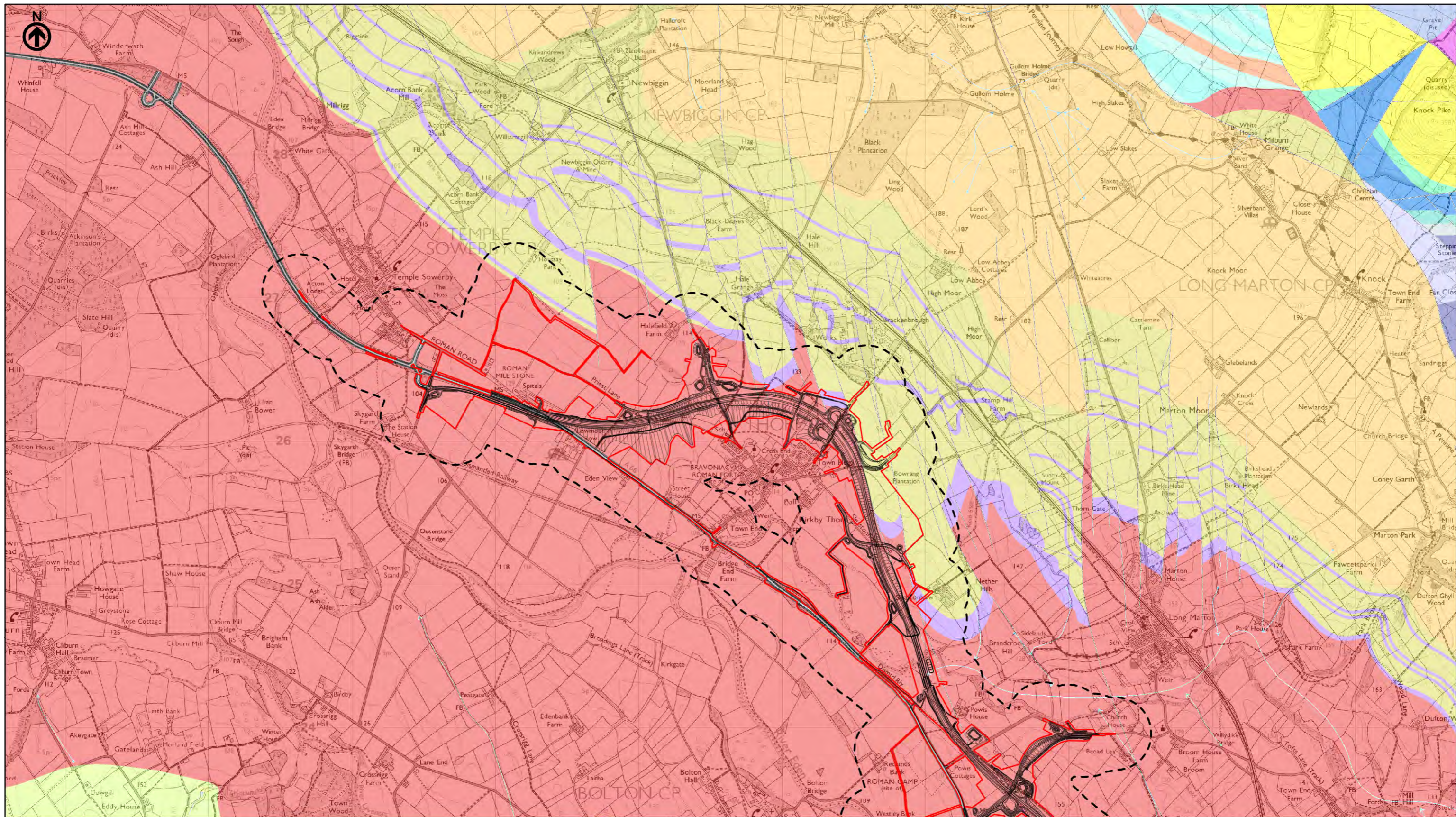
Map Title  
**Figure 9.3**

Published Geology - Bedrock Geology  
 Scheme: 03, Penrith to Temply Sowerby  
 Sheet 2 of 10

Map Number	Project	Originator	Volume
HE565627	-	AMY	EGT
S00	-	MP - LG	005102
Location		Type	Role   Number

Suitability	Suitability Description	Revision
S4	FIT FOR STAGE APPROVAL	P02





**national highways** 3 Piccadilly Place Manchester M1 3BN

P02	First Issue	CHAL	CESL	CMCG	AMIT	KWA
		17/03/22	17/03/22	17/03/22	20/04/22	20/04/22
Revision	Created	Checked	Reviewed	Approved	Authorised	

Kilometres  
0 1 2

Scale @ A3: 1:25,000 | Project Ref No HE565627 | Stage: Stage 3

© Crown copyright and database rights (2022). All rights reserved. OS 100030649.  
Contains British Geological Survey materials © UKRI 2022  
Contains public sector information licensed under the Open Government Licence v3.0.

Project Name  
**A66 Northern Trans-Pennine Project**

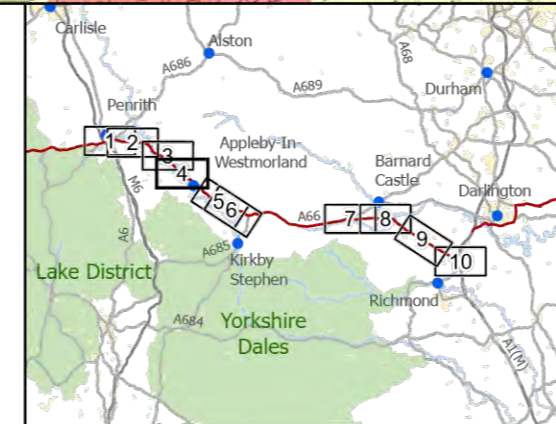
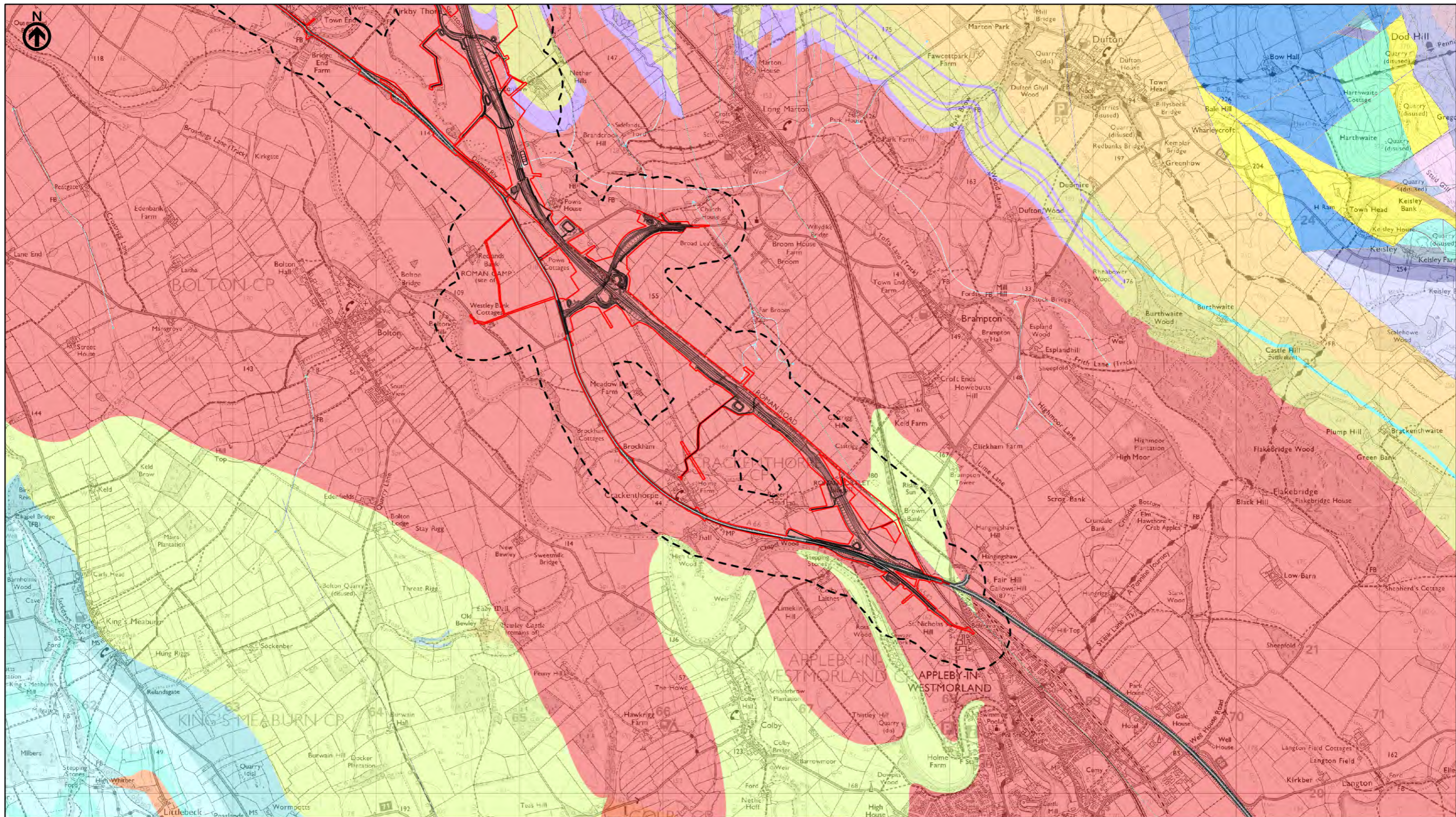
Map Title  
**Figure 9.3**

Published Geology - Bedrock Geology  
Scheme: 0405, Temple Sowerby to Appleby  
Sheet 3 of 10

Map Number	Project	Originator	Volume
HE565627	-	AMY	EGT
S00	-	MP - LG	005103
Location		Type	Role   Number

Suitability	Suitability Description	Revision
S4	FIT FOR STAGE APPROVAL	P02





**national highways** 3 Piccadilly Place Manchester M1 3BN

P02	First Issue	CHAL	CESL	CMCG	AMIT	KWHA
	Created	17/03/22	17/03/22	17/03/22	20/04/22	20/04/22
Revision	Created	Checked	Reviewed	Approved	Authorised	

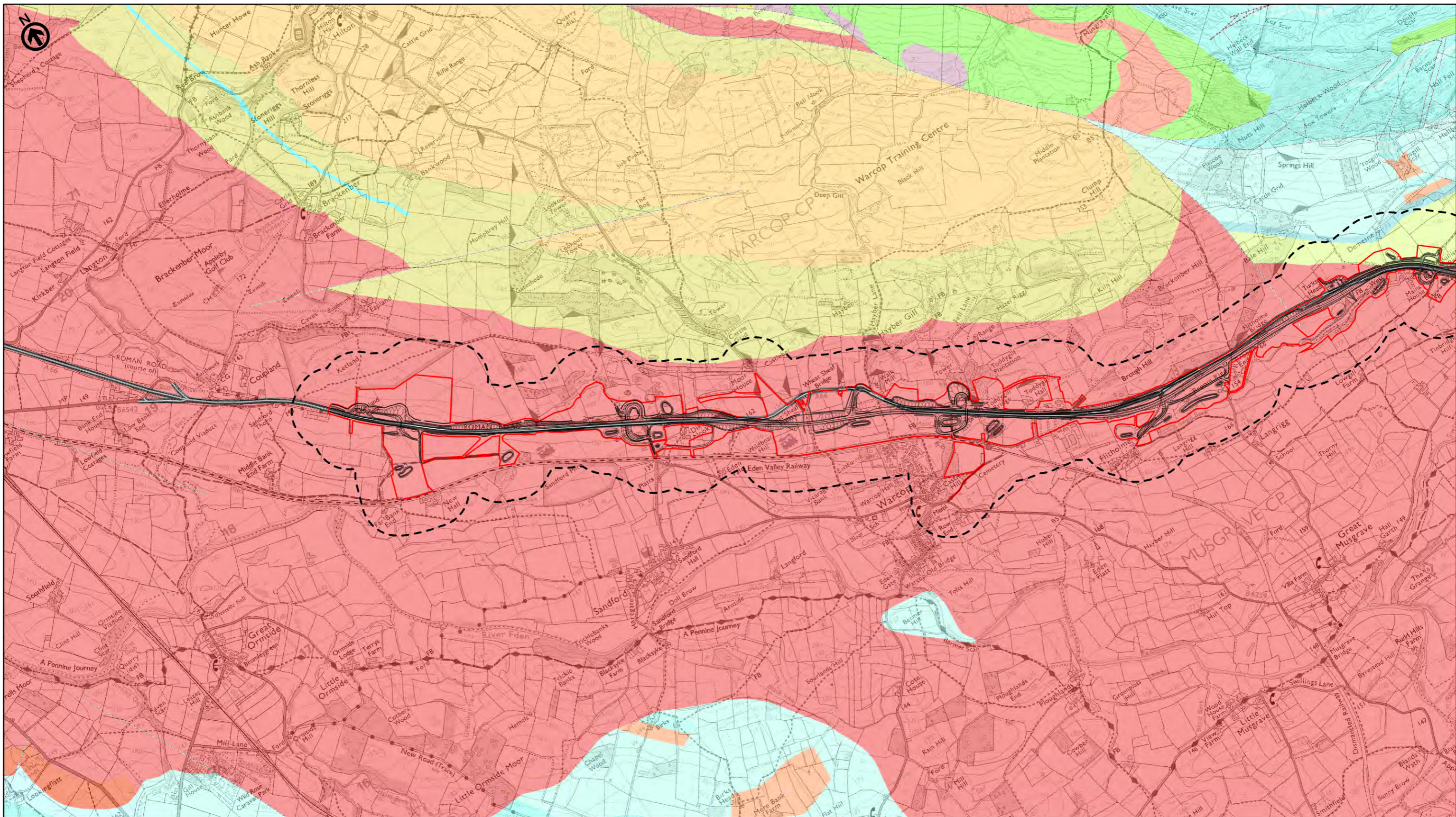
Kilometres  
0 1 2

Scale @ A3: 1:25,000 | Project Ref No HE565627 | Stage: Stage 3

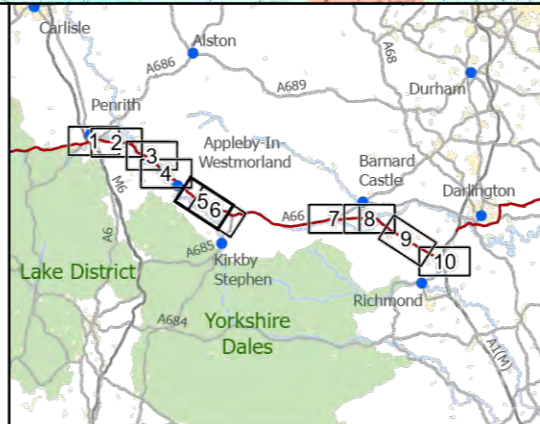
© Crown copyright and database rights (2022). All rights reserved. OS 100030649.  
Contains British Geological Survey materials © UKRI 2022  
Contains public sector information licensed under the Open Government Licence v3.0.

Project Name <b>A66 Northern Trans-Pennine Project</b>			
Map Title <b>Figure 9.3</b>			
Published Geology - Bedrock Geology			
Scheme: 0405, Temple Sowerby to Appleby			
Sheet 4 of 10			
Map Number Project	Originator	Volume	
HE565627	AMY	EGT	
S00	MP	LG	005104
Location	Type	Role	Number
Suitability S4	Suitability Description <b>FIT FOR STAGE APPROVAL</b>		Revision P02





- Route Alignment
- Existing A66
- Order Limits
- Study Area 250m
- BGS 1:50k Linear Features
- Mineral Vein
- ◀ Glacial Meltwater Channel
- Fault Unspecified
- BGS 1:50k Bedrock
- Alston Formation - Mudstone Sandstone and Siltstone
- Alston Formation - Sandstone
- Belah Dolomite
- Brockram Breccia
- Crag Limestone
- Eden Shales
- Evaporite - Gypsum
- Four Fathom Limestone
- Great Limestone Member
- Little Limestone
- Penrith Sandstone
- St Bees Sandstone Member
- Stainmore Formation - Mudstone, Siltstone and Sandstone
- Three Yard Limestone



**national highways** 3 Piccadilly Place Manchester M1 3BN

P02	First Issue				
	CHAL	CESL	CMCG	AMIT	KWHA
	17/03/22	17/03/22	17/03/22	20/04/22	20/04/22
Revision	Created	Checked	Reviewed	Approved	Authorised

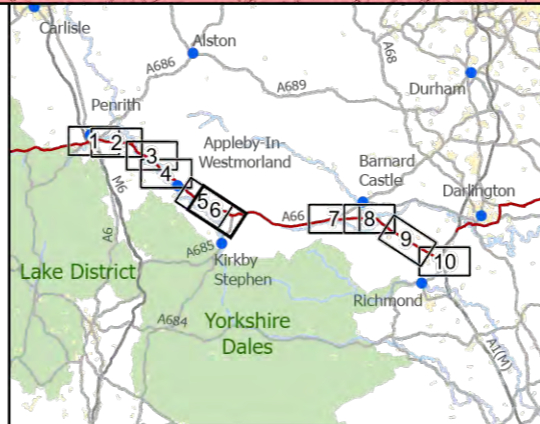
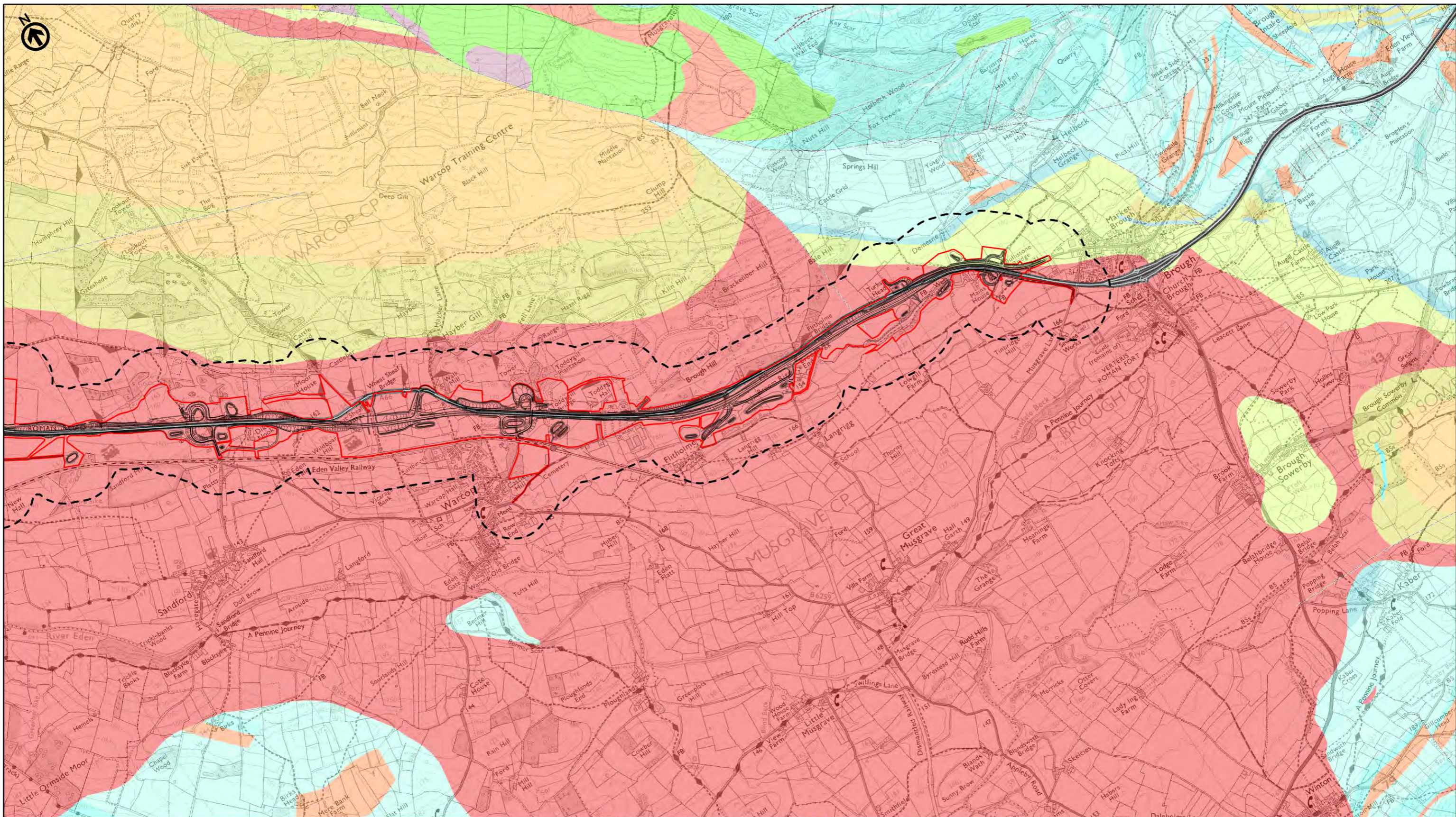
Kilometres  
0 1 2

Scale @ A3: 1:25,000 | Project Ref No HE565627 | Stage: Stage 3

© Crown copyright and database rights (2022). All rights reserved. OS 100030649.  
Contains British Geological Survey materials © UKRI 2022  
Contains public sector information licensed under the Open Government Licence v3.0.

Project Name <b>A66 Northern Trans-Pennine Project</b>			
Map Title <b>Figure 9.3</b>			
Published Geology - Bedrock Geology			
Scheme: 06, Appleby to Brough			
Sheet 5 of 10			
Map Number Project	Originator	Volume	
HE565627	AMY	EGT	
Location S00		Type	Role
MP - LG - 005105			Number
Suitability S4	Suitability Description FIT FOR STAGE APPROVAL		Revision P02





**national highways** 3 Piccadilly Place Manchester M1 3BN

P02	First Issue				
	CHAL	CESL	CMCG	AMIT	KWHA
	17/03/22	17/03/22	17/03/22	20/04/22	20/04/22
Revision	Created	Checked	Reviewed	Approved	Authorised

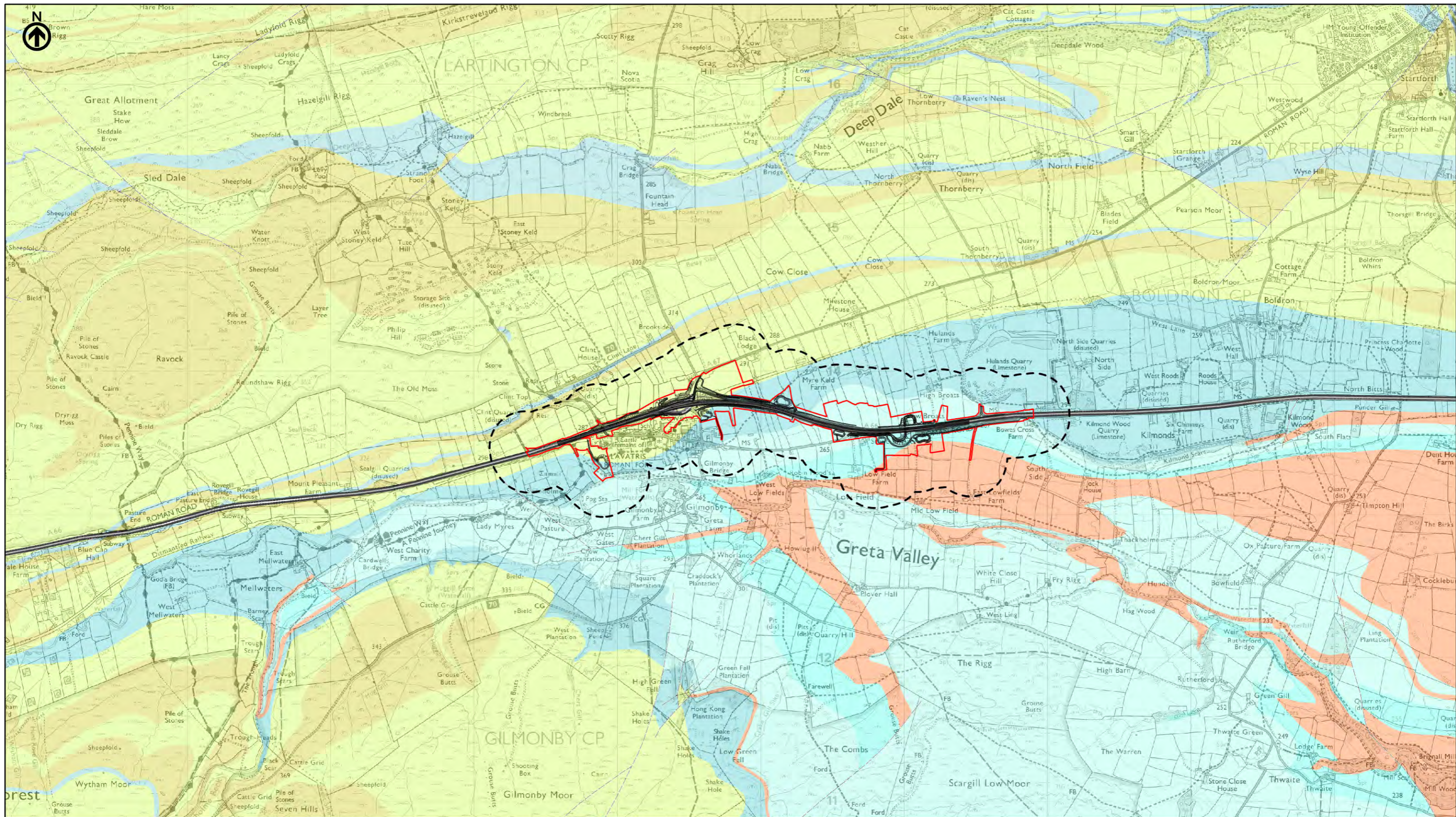
Kilometres  
0 1 2

Scale @ A3: 1:25,000 | Project Ref No HE565627 | Stage: Stage 3

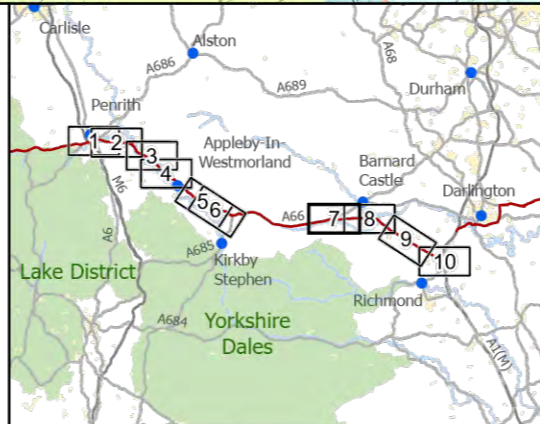
© Crown copyright and database rights (2022). All rights reserved. OS 100030649.  
Contains British Geological Survey materials © UKRI 2022  
Contains public sector information licensed under the Open Government Licence v3.0.

Project Name <b>A66 Northern Trans-Pennine Project</b>			
Map Title <b>Figure 9.3</b>			
Published Geology - Bedrock Geology			
Scheme: 06, Appleby to Brough			
Sheet 6 of 10			
Map Number Project	Originator	Volume	
HE565627	AMY	EGT	
S00	MP	LG	005106
Location	Type	Role	Number
Suitability S4	Suitability Description <b>FIT FOR STAGE APPROVAL</b>		Revision P02





- Route Alignment
- Existing A66
- Order Limits
- Study Area 250m
- BGS 1:50k Linear Features
- Mineral Vein
- ◀ Glacial Meltwater Channel
- - - Fault Unspecified
- BGS 1:50k Bedrock
- Alston Formation - Mudstone Sandstone and Siltstone
- Alston Formation - Sandstone
- Belah Dolomite
- Brockram Breccia
- Crag Limestone
- Eden Shales
- Evaporite - Gypsum
- Four Fathom Limestone
- Great Limestone Member
- Little Limestone
- Penrith Sandstone
- St Bees Sandstone Member
- Stainmore Formation - Mudstone, Siltstone and Sandstone
- Three Yard Limestone



**national highways**  
3 Piccadilly Place  
Manchester  
M1 3BN

P02	First Issue	CHAL	CESL	CMCG	AMIT	KWA
		17/03/22	17/03/22	17/03/22	20/04/22	20/04/22
Revision	Created	Checked	Reviewed	Approved	Authorised	

Kilometres  
0 1 2

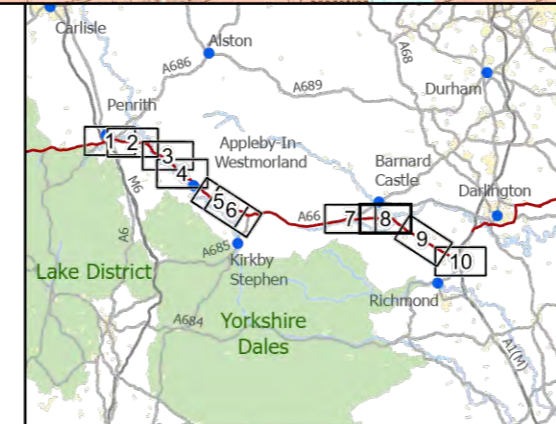
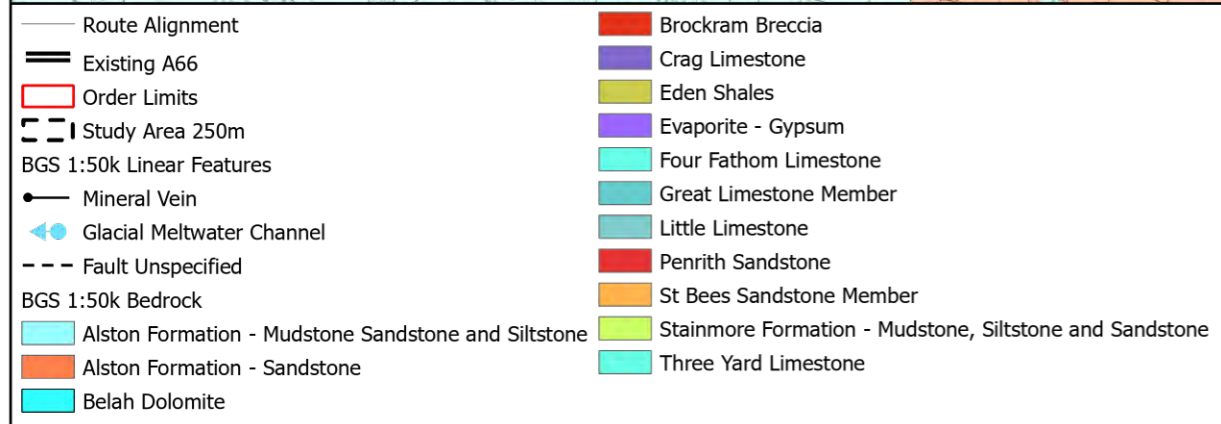
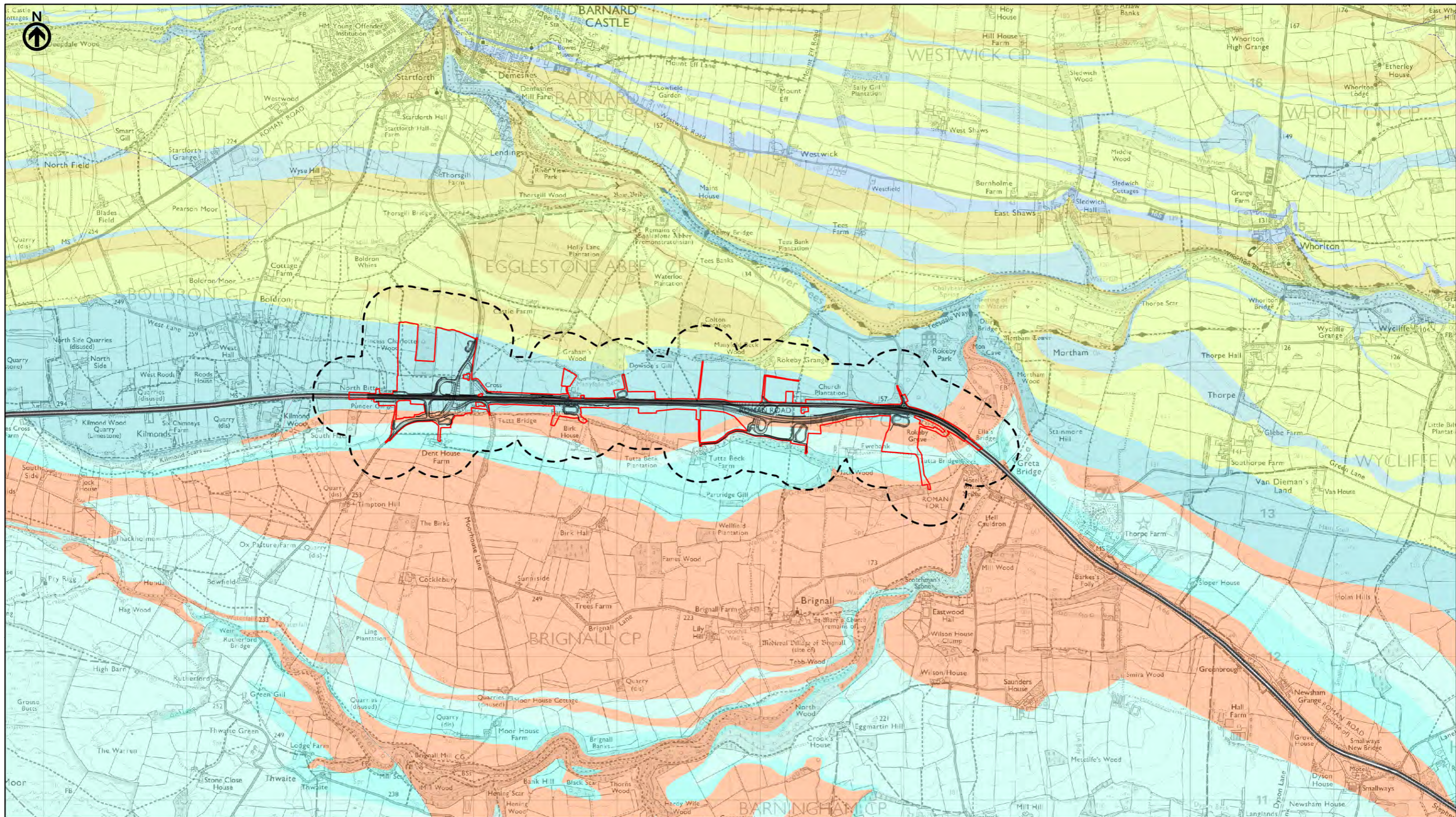
Scale @ A3: 1:25,000 | Project Ref No HE565627 | Stage: Stage 3

© Crown copyright and database rights (2022). All rights reserved. OS 100030649.  
Contains British Geological Survey materials © UKRI 2022  
Contains public sector information licensed under the Open Government Licence v3.0.

Project Name <b>A66 Northern Trans-Pennine Project</b>			
Map Title <b>Figure 9.3</b>			
Published Geology - Bedrock Geology			
Scheme: 07, Bowes Bypass			
Sheet 7 of 10			
Map Number Project	Originator	Volume	
HE565627	AMY	EGT	
S00	MP	LG	005107
Location	Type	Role	Number
S4	FIT FOR STAGE APPROVAL		P02
Suitability	Suitability Description		Revision
S4	FIT FOR STAGE APPROVAL		P02

This Environmental Statement Figure meets the requirements of Regulation 5(2)(l)(i) of the Infrastructure Planning (Applications: Prescribed Forms and Procedure Regulations) 2009.





**national highways**

3 Piccadilly Place  
Manchester  
M1 3BN

P02	First Issue	CHAL	CESL	CMCG	AMIT	KWHA
		17/03/22	17/03/22	17/03/22	20/04/22	20/04/22
Revision	Created	Checked	Reviewed	Approved	Authorised	

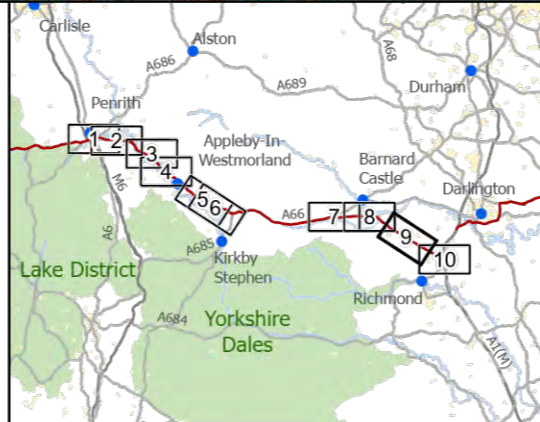
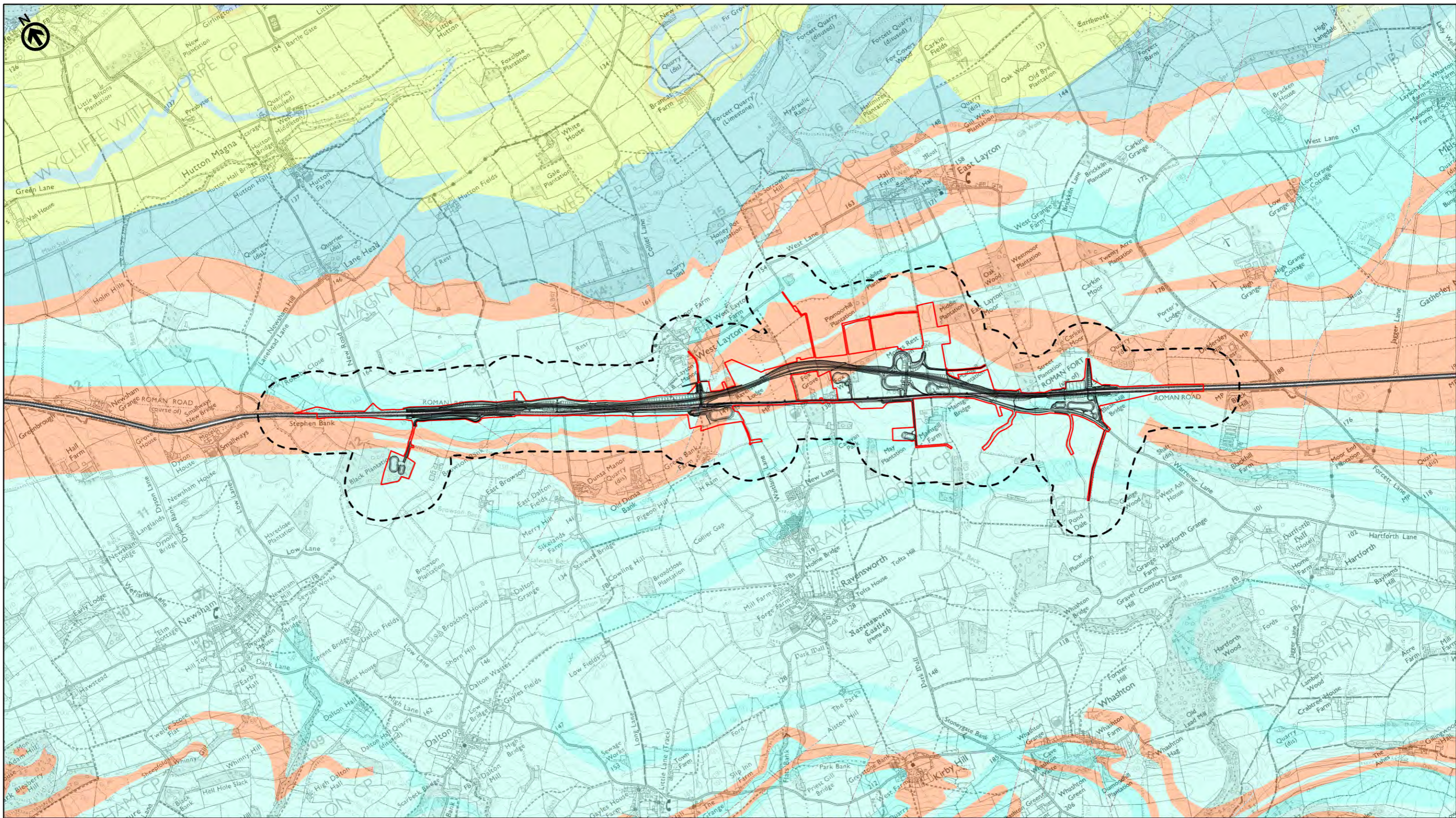
Kilometres

Scale @ A3: 1:25,000 | Project Ref No HE565627 | Stage: Stage 3

© Crown copyright and database rights (2022). All rights reserved. OS 100030649.  
Contains British Geological Survey materials © UKRI 2022  
Contains public sector information licensed under the Open Government Licence v3.0.

Project Name <b>A66 Northern Trans-Pennine Project</b>			
Map Title <b>Figure 9.3</b>			
Published Geology - Bedrock Geology			
Scheme: 08, Cross Lanes to Rokeby			
Sheet 8 of 10			
Map Number	Project	Originator	Volume
HE565627	-	AMY	EGT
Location		Type	Role
S00		-	MP - LG - 005108
Suitability	Suitability Description		Revision
S4	FIT FOR STAGE APPROVAL		P02





**national highways** 3 Piccadilly Place Manchester M1 3BN

P02	First Issue	CHAL	CESL	CMCG	AMIT	KWHA
	Created	17/03/22	17/03/22	17/03/22	20/04/22	20/04/22
Revision	Created	Checked	Reviewed	Approved	Authorised	

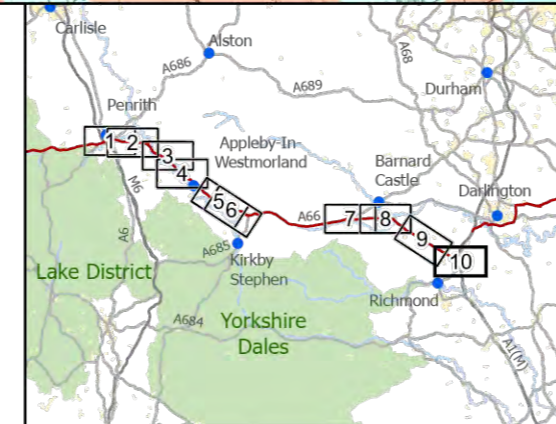
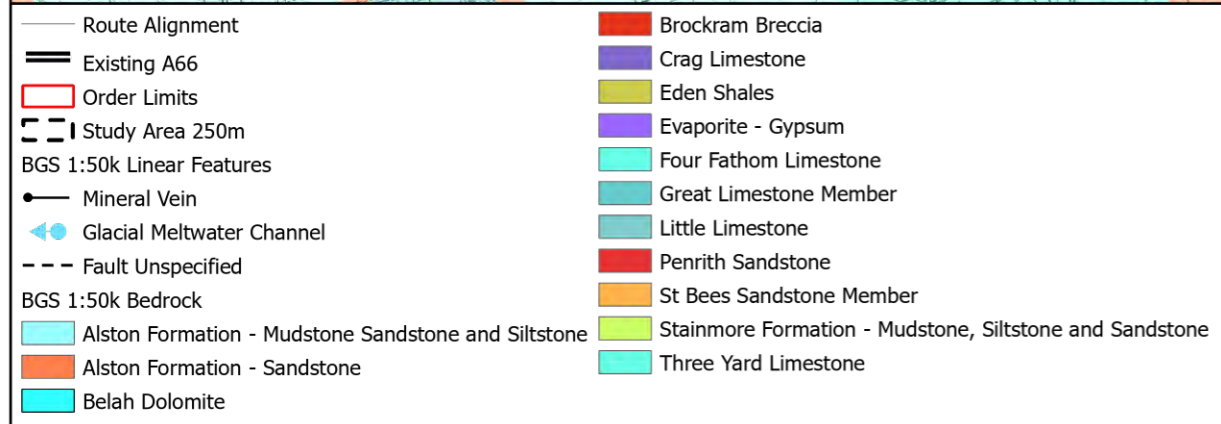
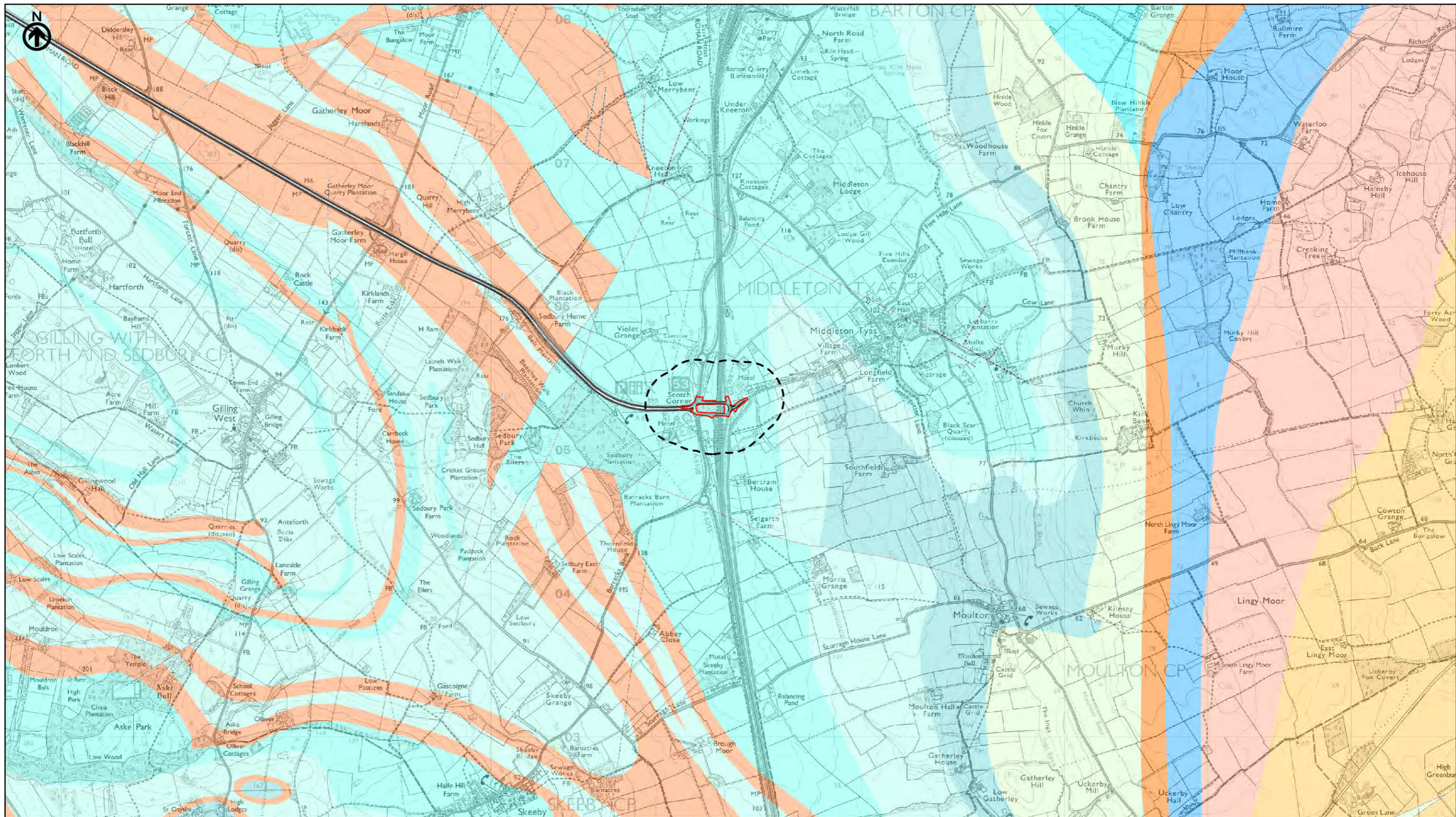
Kilometres  
0 1 2

Scale @ A3: 1:25,000 | Project Ref No HE565627 | Stage: Stage 3

© Crown copyright and database rights (2022). All rights reserved. OS 100030649.  
Contains British Geological Survey materials © UKRI 2022  
Contains public sector information licensed under the Open Government Licence v3.0.

Project Name <b>A66 Northern Trans-Pennine Project</b>			
Map Title <b>Figure 9.3</b>			
Published Geology - Bedrock Geology			
Scheme: 09, Stephen Bank to Carkin Moor			
Sheet 9 of 10			
Map Number Project	Originator	Volume	
HE565627	AMY	EGT	
S00	MP	LG	005109
Location	Type	Role	Number
S4	FIT FOR STAGE APPROVAL		P02
Suitability	Suitability Description		Revision
S4	FIT FOR STAGE APPROVAL		P02





**national highways**  
3 Piccadilly Place  
Manchester  
M1 3BN

P02	First Issue				
	CHAL	CESL	CMCG	AMIT	KWHA
	17/03/22	17/03/22	17/03/22	20/04/22	20/04/22
Revision	Created	Checked	Reviewed	Approved	Authorised

Kilometres  
0 1 2

Scale @ A3: 1:25,000 | Project Ref No HE565627 | Stage: Stage 3

© Crown copyright and database rights (2022). All rights reserved. OS 100030649.  
Contains British Geological Survey materials © UKRI 2022  
Contains public sector information licensed under the Open Government Licence v3.0.

Project Name <b>A66 Northern Trans-Pennine Project</b>			
Map Title <b>Figure 9.3</b>			
Published Geology - Bedrock Geology			
Scheme: 11, A1(M) Junction 53 Scotch Corner			
Sheet 10 of 10			
Map Number Project	Originator	Volume	
HE565627	AMY	EGT	
S00 Location	MP - LG - 005150 Type   Role   Number		
Suitability S4	Suitability Description FIT FOR STAGE APPROVAL		Revision P02